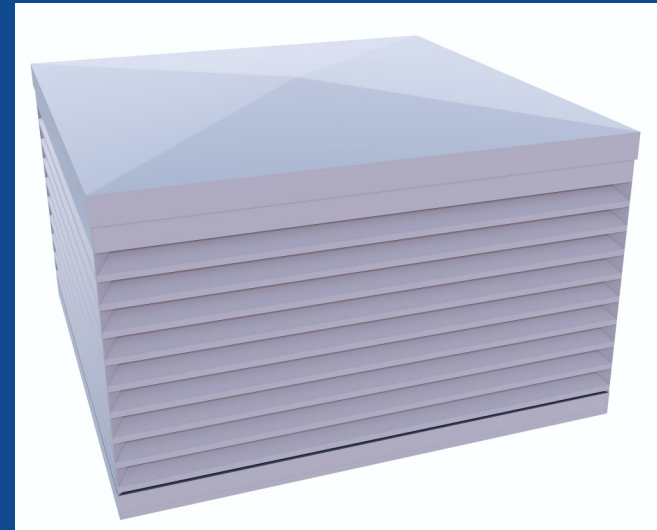
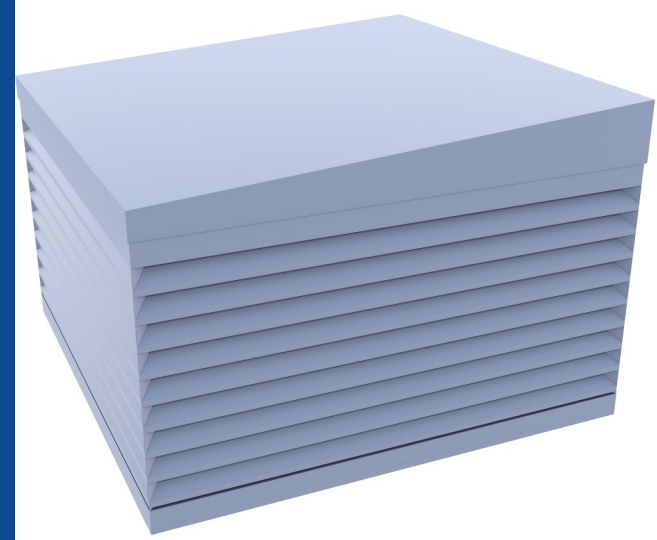


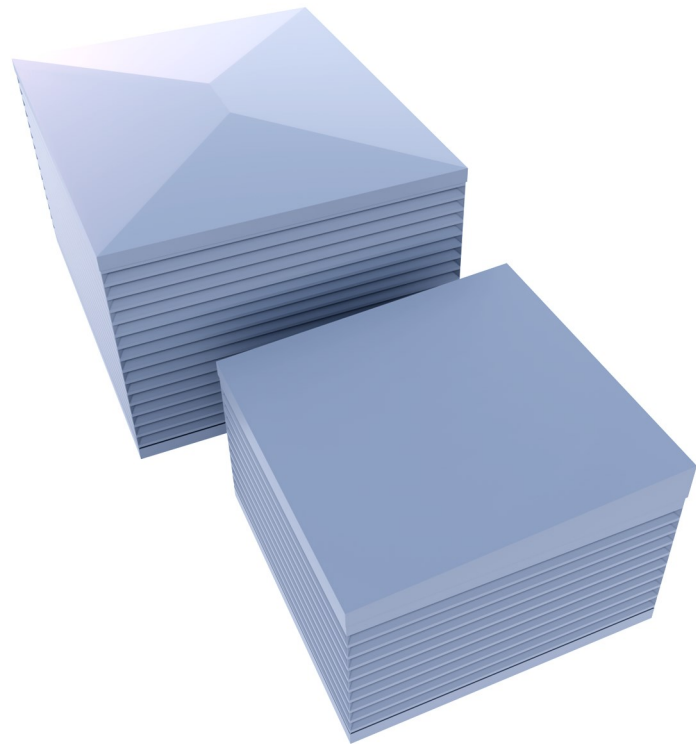
Penthouse

Aluminium Louvres



Website: www.louvre.co.uk

Email: sales@louvre.co.uk



Penthouse Louvres/ Turret Louvres

Bridge Louvre Company manufactures a wide range of louvred turrets/penthouse louvres and depending on customer requirements, a variety of louvre blade, frame and roof configurations are available. All units are made to measure to fix to a upstand/curb. Standard units are usually square or rectangular, but we also offer multi-sided units, units with doors, removable sections, hinged roofs and more.

Materials- Louvred components are aluminium extrusions type 6063-T6 to BS1474

Appearance- Our standard unit is the **BL050-PH**. With this unit the extruded louvre blades are mounted at 50mm centres within 99mm or 143mm deep frame, with intermediate support mullions and complete with factory mitred corners with flashing plate.

Bird mesh is fitted to the rear of the louvre blades as standard by screw fixing into integral screw ports.

The assembly is capped with an aluminium sheet metal pitched roof (hipped or mono-pitch). Roofs can also be provided as a flat section with plywood reinforcement below.

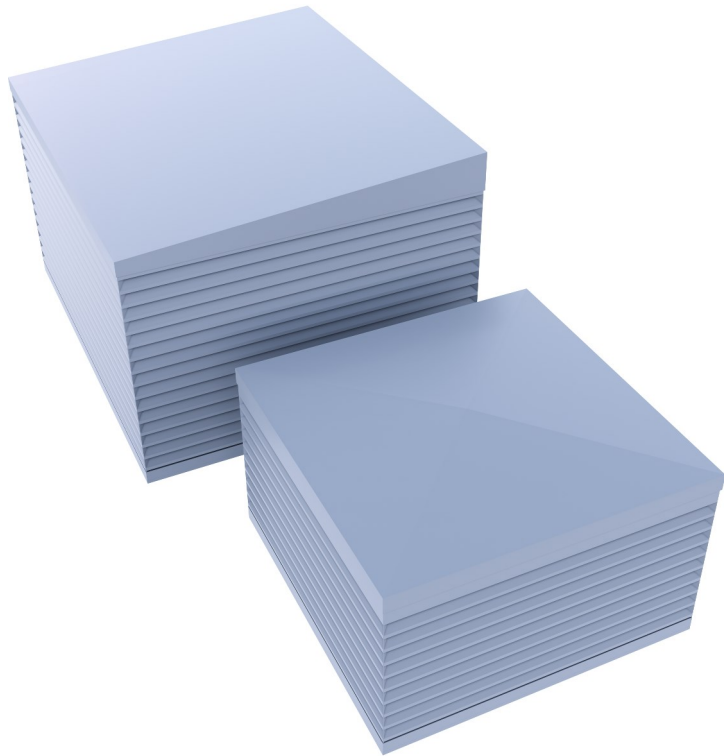
Blade/ Frame Options

Blade: Available in BL050, BL50D (enhanced weather protection), BL075, BL090 options. Choice may depend on issues such as cost, appearance, free area, air resistance and rain defence properties.

Consideration should always be given to the level of weather resistance required before specifying or ordering a roof mounted unit. Weather test results for our products are based on a single 1m x 1m wall panel

Frame: 99mm or 143mm deep depending on louvre blade type.

Roof: As standard with hipped or mono-pitch type 2mm aluminium roof. Multi-section roofs come complete with capping strip to joints and factory applied sealant tape. Insulation to underside of roof is also available.



Guard (mesh) Options:

- Bird Guard– Galvanised steel with 12.7mm x 12.7mm apertures
- Vermin Guard– Galvanised steel with 6.35mm x 6.35mm apertures
- Insect Mesh– PVC coated fibre glass or stainless steel or HDPE options
- Internal Splitters/Trays/Blanking: These are all available to suit customer requirements

Hinged/removable Sections: These can be incorporated into any of our penthouse louvres to provide access into the units once installed.

Fixing

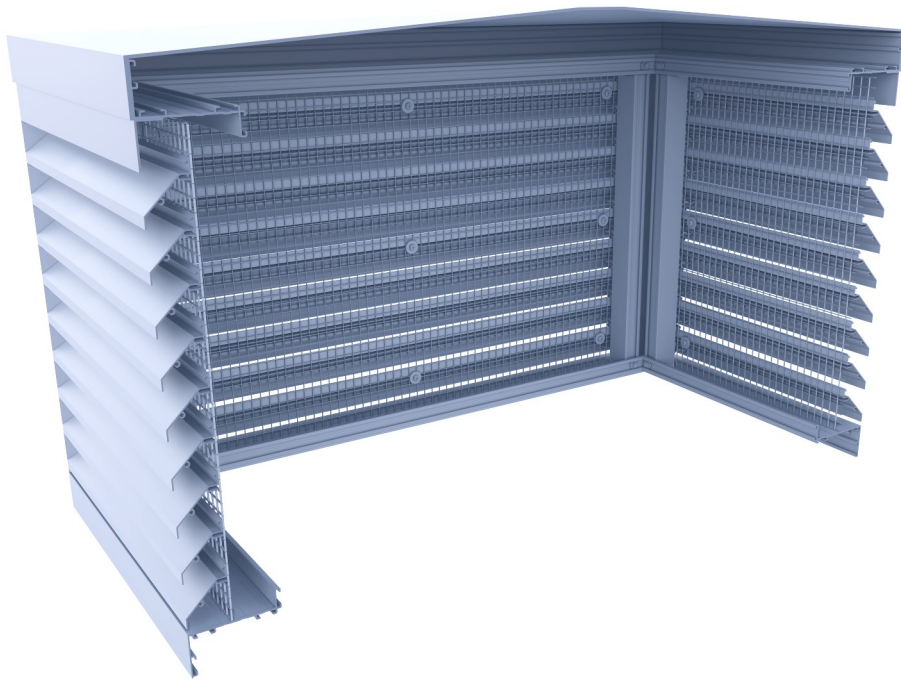
The base is suitable for mounting and fixing onto builders curb with a recommended minimum width of 100mm for the 99mm frame or 150mm for the 143mm frame.

Fixings used must be suitable for the type upstand/curb construction and are to be supplied by the installer

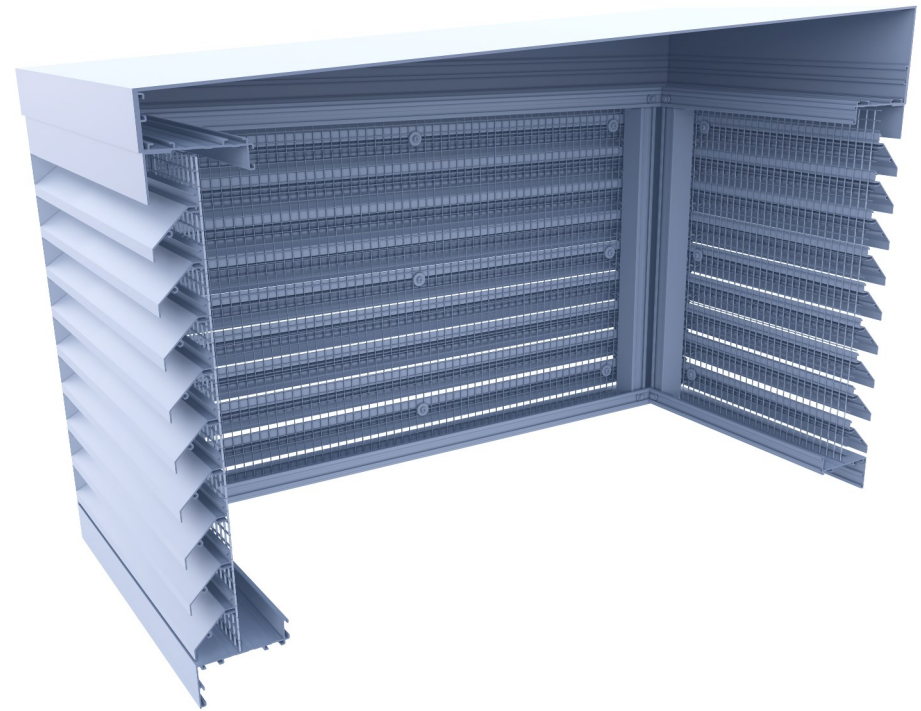
Finishes

- Mill finish (unpainted) aluminium.
- Polyester Powder coatings to any standard RAL or BS 4800 range colours.
- Syntha Pulvin
- Anodised.

BL050-F099F Penthouse Louvre

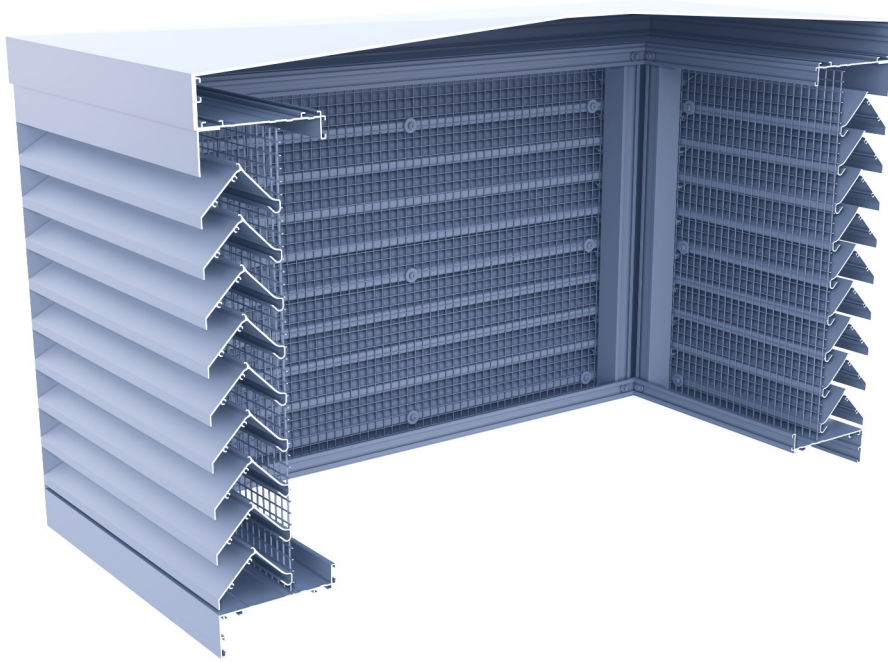


BL050-F099F
Hinged Roof

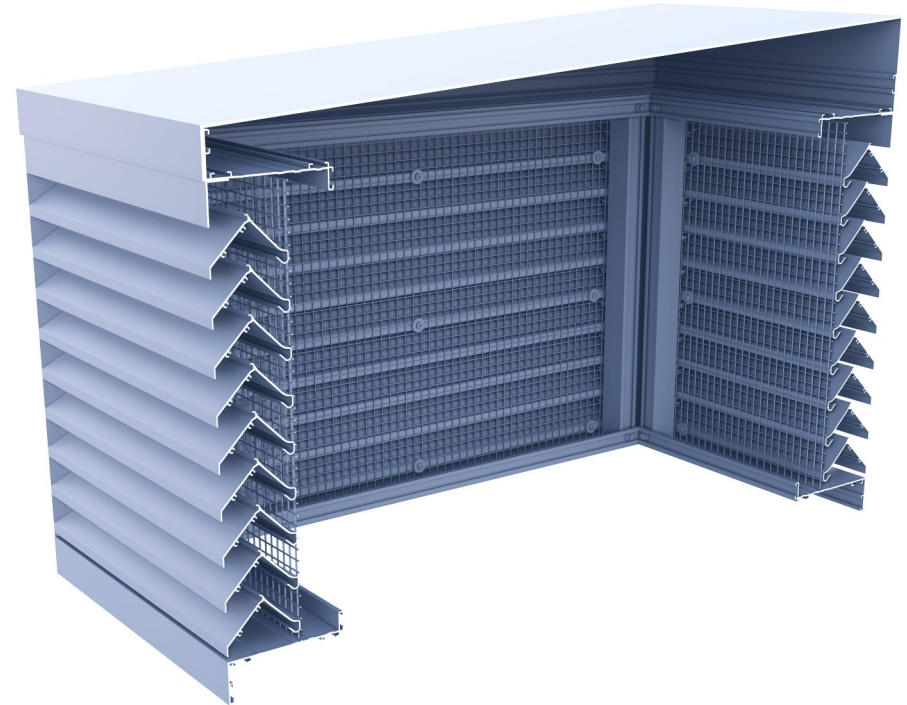


BL050-F099F
Monopitch Roof

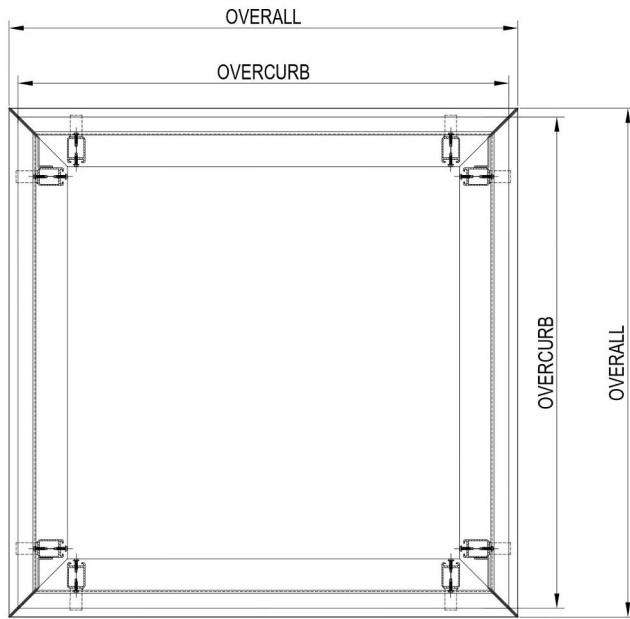
BL50D-F143F Penthouse Louvre



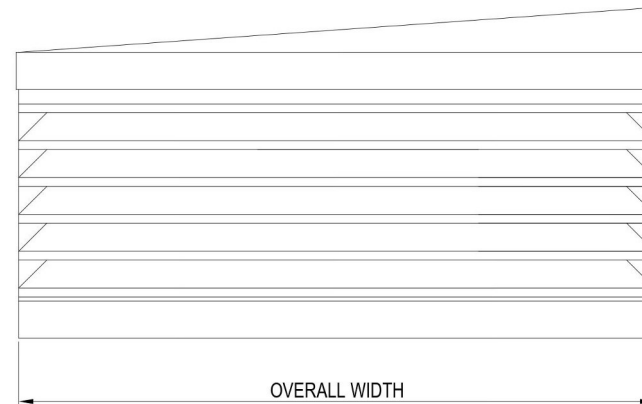
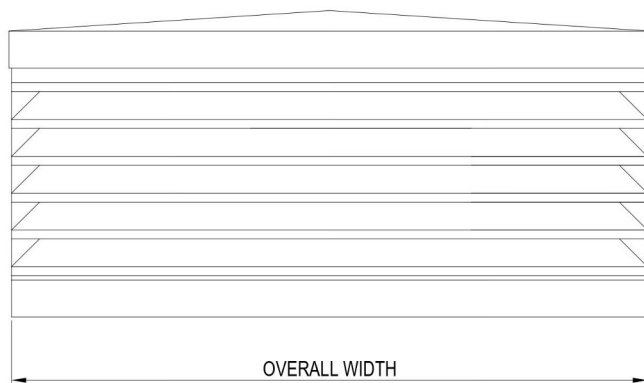
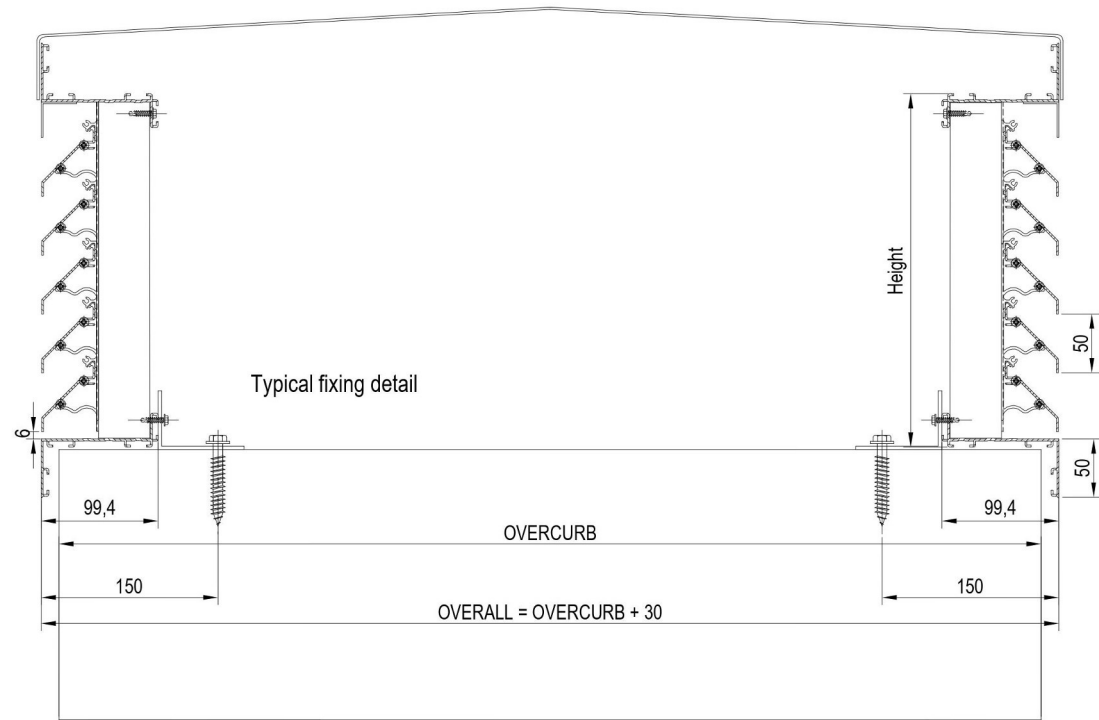
BL50D-F143F
Hinged Roof



BL50D-F143F
Monopitch Roof



Technical Details



Technical Details

